

Madison, Wisconsin

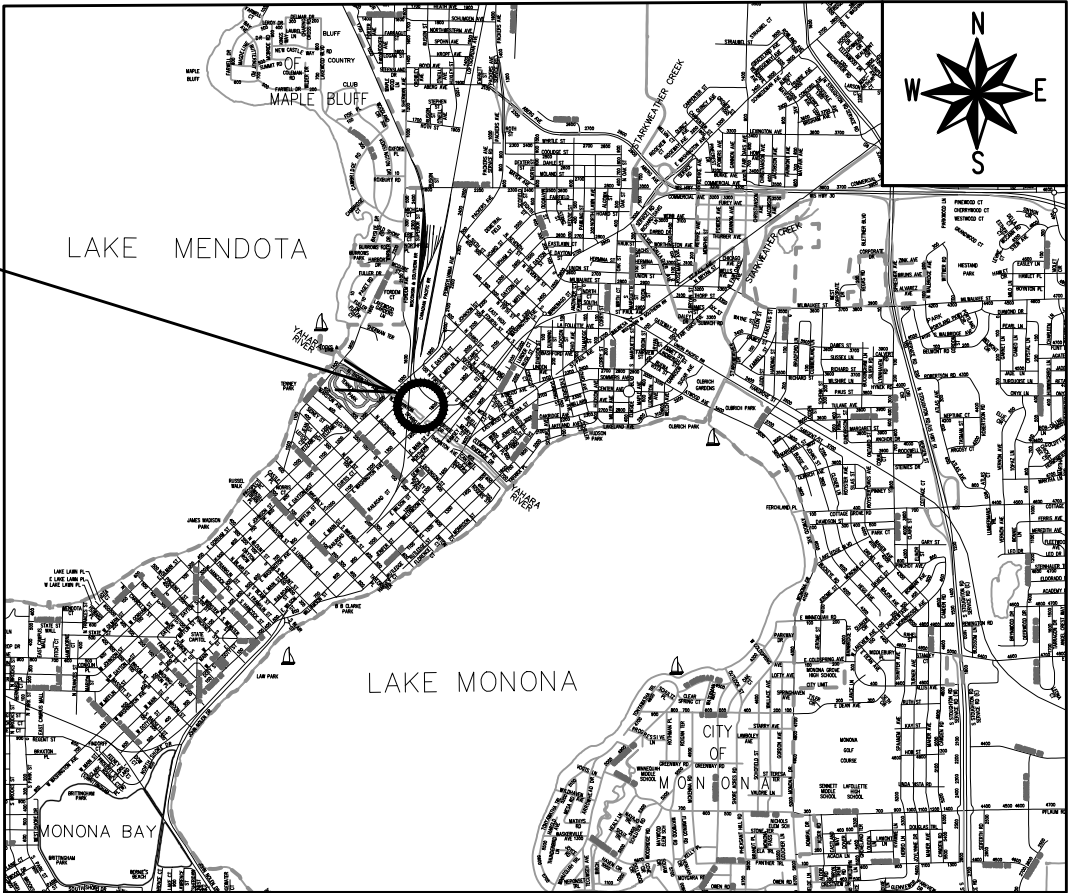
INDEX OF SHEETS

SHEET NO.	1	COVER SHEET
SHEET NO.	EX1	EXISTING CONDITIONS
SHEET NO.	S1	SITE PLAN
SHEET NO.	GP1	GRADING & EROSION CONTROL PLAN
SHEET NO.	PP1	ASPHALT PATH - PLAN AND PROFILE
SHEET NO.	VP1	VEGETATION PLAN
SHEET NO.	D1	DETAIL SHEET

CITY OF MADISON
CITY ENGINEERING DIVISION
DEPARTMENT OF PUBLIC WORKS
PLAN OF PROPOSED IMPROVEMENT
BURR JONES SHORELINE REPAIR

CITY PROJECT NO. 14374
CONTRACT NO. 9238

PROJECT
LOCATION



PUBLIC IMPROVEMENT PROJECT
APPROVED

APPROVED DATE
06/04/2024

BY THE COMMON COUNCIL
OF MADISON, WISCONSIN

PUBLIC IMPROVEMENT DESIGN
APPROVED BY:

Jul 24, 2024

City Engineer

Date

SITE
DESIGNED BY:



Jul 24, 2024

PLOT SCALE: 1:1_XREF

PLOT NAME: ---

REV. DATE: 7/16/2024 12:44 PM

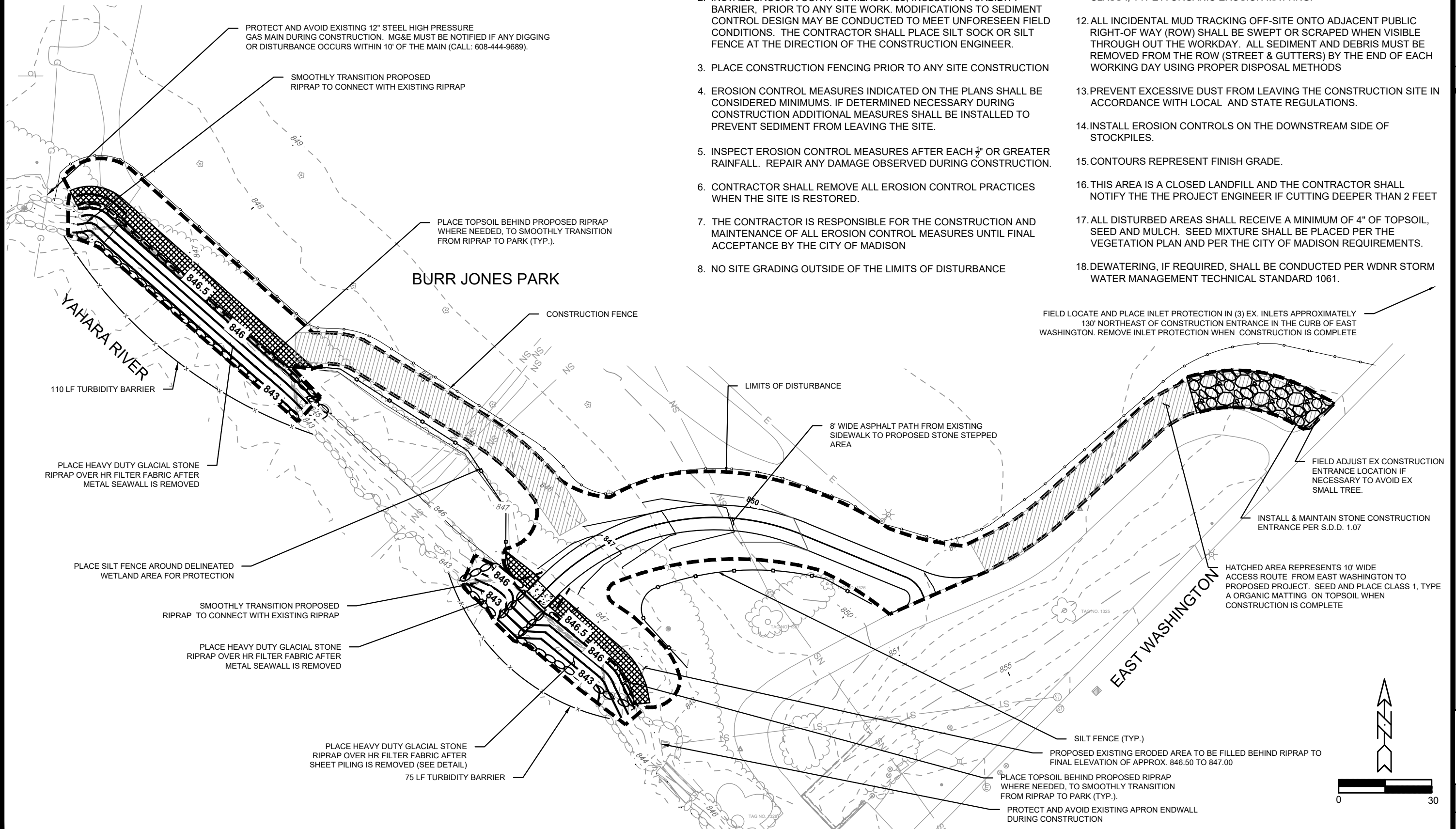
ORIGINATOR: CITY_OF_MADISON

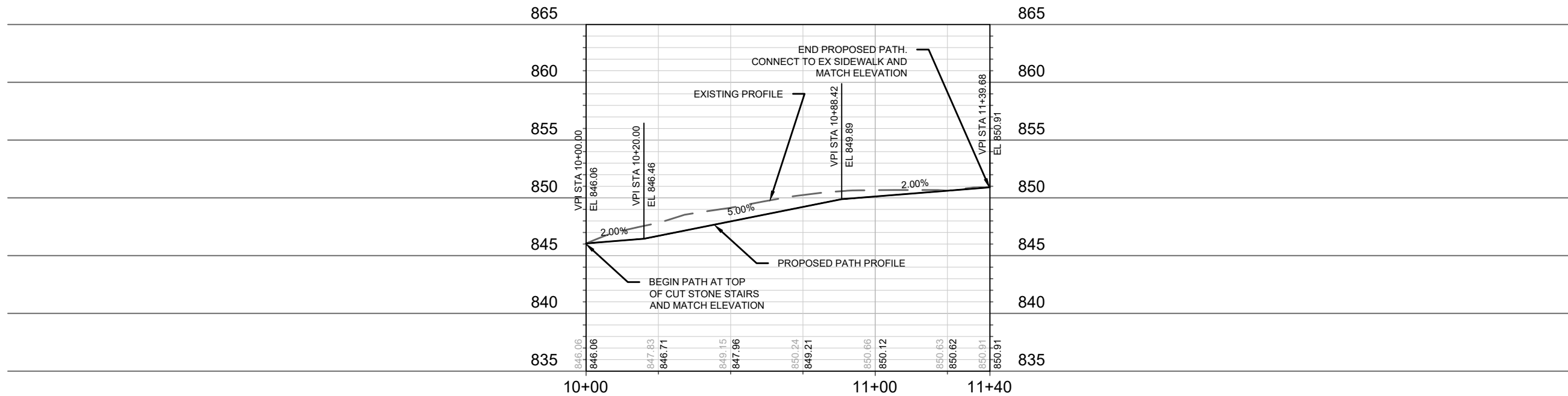
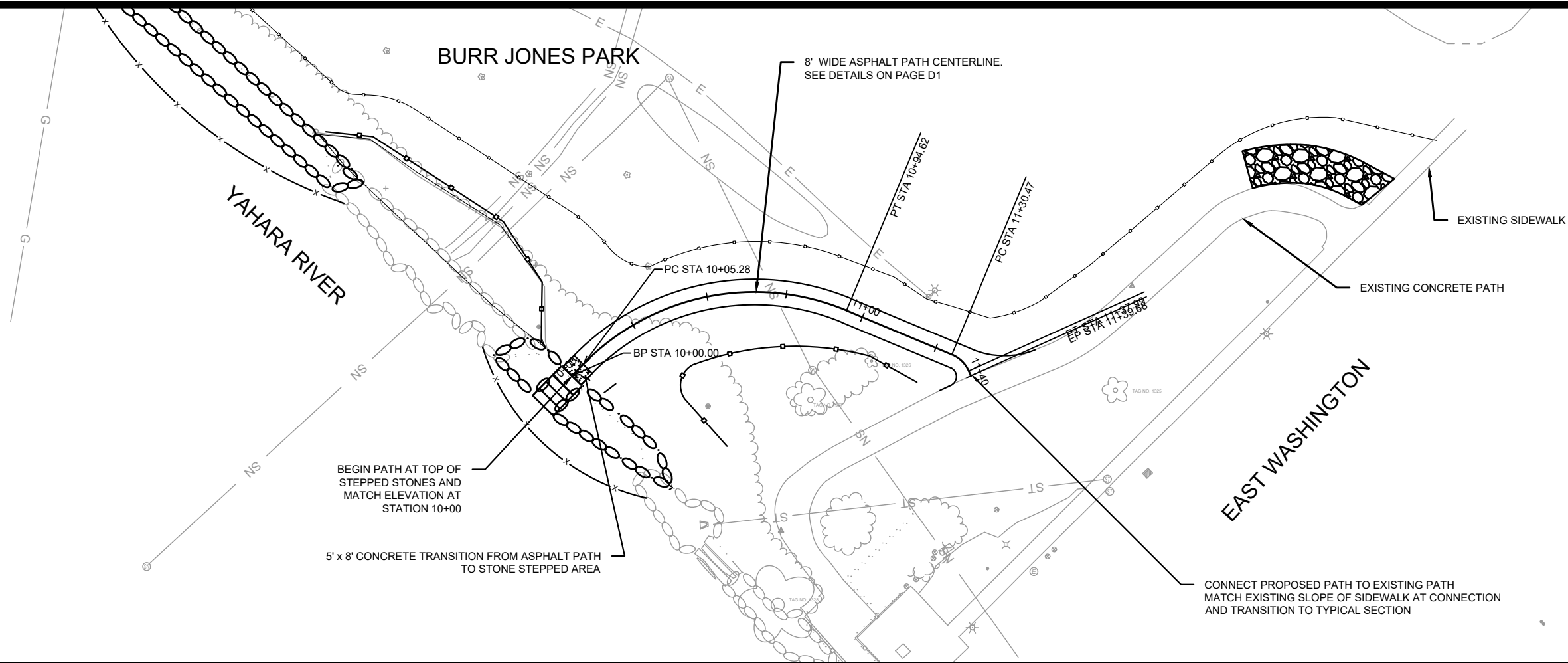
NOTE: CONSTRUCTION EQUIPMENT AND STOCKPILING SHALL BE PLACED TO AVOID EXISTING GRADED FIELD, LANDSCAPING AND FIELD LIGHTING

GRADING & EROSION CONTROL NOTES:

1. ALL EROSION CONTROL MEASURES SHALL BE CONSTRUCTED AND MAINTAINED BY THE CONTRACTOR IN ACCORDANCE WITH THE WISCONSIN DNR TECHNICAL STANDARDS AND CITY OF MADISON STANDARD SPECIFICATIONS.
2. INSTALL EROSION CONTROL MEASURES, INCLUDING TURBIDITY BARRIER, PRIOR TO ANY SITE WORK. MODIFICATIONS TO SEDIMENT CONTROL DESIGN MAY BE CONDUCTED TO MEET UNFORESEEN FIELD CONDITIONS. THE CONTRACTOR SHALL PLACE SILT SOCK OR SILT FENCE AT THE DIRECTION OF THE CONSTRUCTION ENGINEER.
3. PLACE CONSTRUCTION FENCING PRIOR TO ANY SITE CONSTRUCTION
4. EROSION CONTROL MEASURES INDICATED ON THE PLANS SHALL BE CONSIDERED MINIMUMS. IF DETERMINED NECESSARY DURING CONSTRUCTION ADDITIONAL MEASURES SHALL BE INSTALLED TO PREVENT SEDIMENT FROM LEAVING THE SITE.
5. INSPECT EROSION CONTROL MEASURES AFTER EACH $\frac{1}{2}$ " OR GREATER RAINFALL. REPAIR ANY DAMAGE OBSERVED DURING CONSTRUCTION.
6. CONTRACTOR SHALL REMOVE ALL EROSION CONTROL PRACTICES WHEN THE SITE IS RESTORED.
7. THE CONTRACTOR IS RESPONSIBLE FOR THE CONSTRUCTION AND MAINTENANCE OF ALL EROSION CONTROL MEASURES UNTIL FINAL ACCEPTANCE BY THE CITY OF MADISON
8. NO SITE GRADING OUTSIDE OF THE LIMITS OF DISTURBANCE

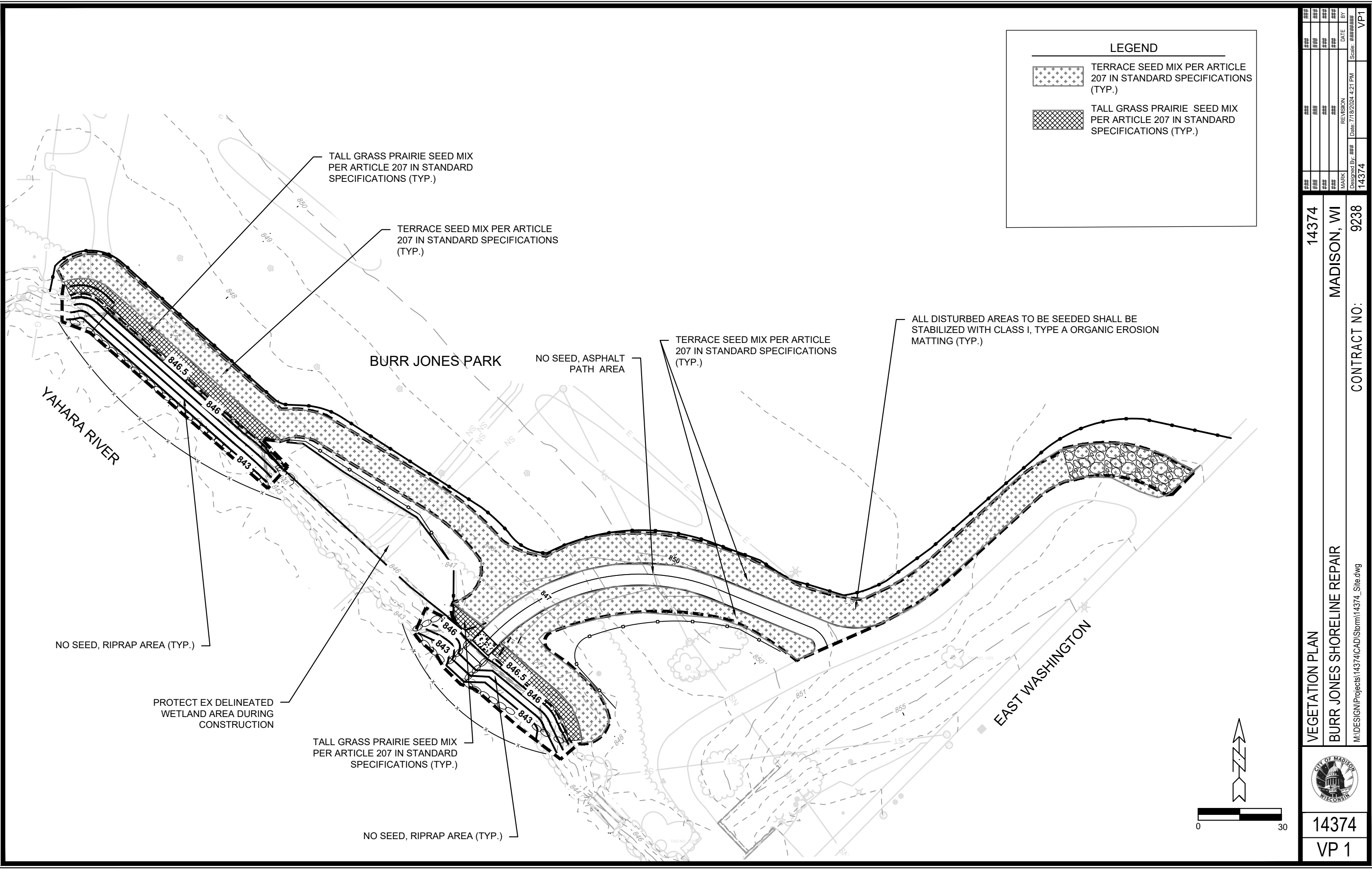
9. INSTALL INLET PROTECTION IN ALL STORM SEWER INLETS AND CATCH BASINS THAT MAY RECEIVE RUNOFF FROM DISTURBED AREAS
10. CUT AND FILL SLOPES SHALL BE NO GREATER THAN 3:1
11. ALL DISTURBED AREAS SHALL BE STABILIZED WITH A MINIMUM OF CLASS I, TYPE A ORGANIC EROSION MATTING.
12. ALL INCIDENTAL MUD TRACKING OFF-SITE ONTO ADJACENT PUBLIC RIGHT-OF WAY (ROW) SHALL BE SWEEPED OR SCRAPED WHEN VISIBLE THROUGH OUT THE WORKDAY. ALL SEDIMENT AND DEBRIS MUST BE REMOVED FROM THE ROW (STREET & GUTTERS) BY THE END OF EACH WORKING DAY USING PROPER DISPOSAL METHODS
13. PREVENT EXCESSIVE DUST FROM LEAVING THE CONSTRUCTION SITE IN ACCORDANCE WITH LOCAL AND STATE REGULATIONS.
14. INSTALL EROSION CONTROLS ON THE DOWNSTREAM SIDE OF STOCKPILES.
15. CONTOURS REPRESENT FINISH GRADE.
16. THIS AREA IS A CLOSED LANDFILL AND THE CONTRACTOR SHALL NOTIFY THE THE PROJECT ENGINEER IF CUTTING DEEPER THAN 2 FEET
17. ALL DISTURBED AREAS SHALL RECEIVE A MINIMUM OF 4" OF TOPSOIL, SEED AND MULCH. SEED MIXTURE SHALL BE PLACED PER THE VEGETATION PLAN AND PER THE CITY OF MADISON REQUIREMENTS.
18. DEWATERING, IF REQUIRED, SHALL BE CONDUCTED PER WDNR STORM WATER MANAGEMENT TECHNICAL STANDARD 1061.





MARK	REVISION	DATE	BY
###	###	###	###
###	###	###	###
###	###	###	###
###	###	###	###

14374	14374	14374	14374
MADISON, WI	MADISON, WI	MADISON, WI	MADISON, WI
CONTRACT NO:	9238	CONTRACT NO:	9238
M:\DESIGN\Projects\14374\CAD\Storm\14374_Site.dwg	M:\DESIGN\Projects\14374\CAD\Storm\14374_Site.dwg	M:\DESIGN\Projects\14374\CAD\Storm\14374_Site.dwg	M:\DESIGN\Projects\14374\CAD\Storm\14374_Site.dwg



LEGEND

TERRACE SEED MIX PER ARTICLE 207 IN STANDARD SPECIFICATIONS (TYP.)

TALL GRASS PRAIRIE SEED MIX PER ARTICLE 207 IN STANDARD SPECIFICATIONS (TYP.)

VEGETATION PLAN	14374	MADISON, WI	9238	VP1
BURR JONES SHORELINE REPAIR				
M:\DESIGN\Projects\14374\CAD\Storm\14374_Site.dwg				
14374				
VP 1				

CONTRACT NO:

DESIGNED BY: ###

DATE: 7/18/2024 4:21 PM

REVISION: ###

BY: ###

